

Smart Network. Smart Business.



 radware

APSolute Vision

Radware APSSolute Vision

Smart and Efficient Application Delivery and Security Management



Enabling Effective Management of Business-Smart Network Resilience, Efficiency and Agility

Deploying and managing a globally distributed application delivery and security network can be complicated. The operating costs of multiple network devices must be minimized, changes must be deployed consistently and the availability, performance and security of the infrastructure must be measured. You need tools to enable early detection of network and security problems, which in turn should quickly alert you of problem areas. The key to minimizing impact is to restore operations quickly.

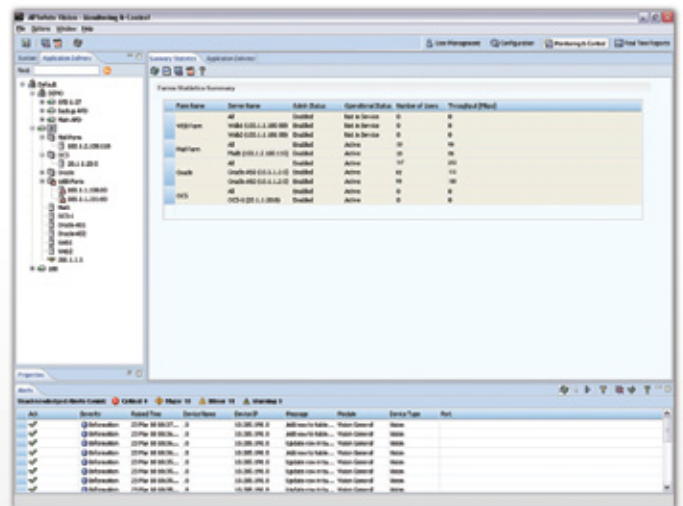
Radware APSSolute® Vision provides a highly available, single point of access for network and security administrators to centrally manage distributed Radware devices and monitor the health, real-time status, performance and security of enterprise-wide application delivery infrastructures.

Cross Data Center Business Continuity Visibility

APSSolute Vision consolidates the monitoring and configuration of several Radware devices across multiple data centers. Removing the need for deploying management appliances in multiple data centers, it reduces IT CAPEX and OPEX and simplifies data center management.

APSSolute Vision continuously monitors and alerts to any degradation of business continuity or performance of the entire infrastructure, providing the following benefits:

- Up-to-date information, and improved business continuity service.
- Effective application delivery and security capacity planning.
- Shorter time frame required to resolve business continuity issues.
- Minimized impact of service downtime on the enterprise's business.



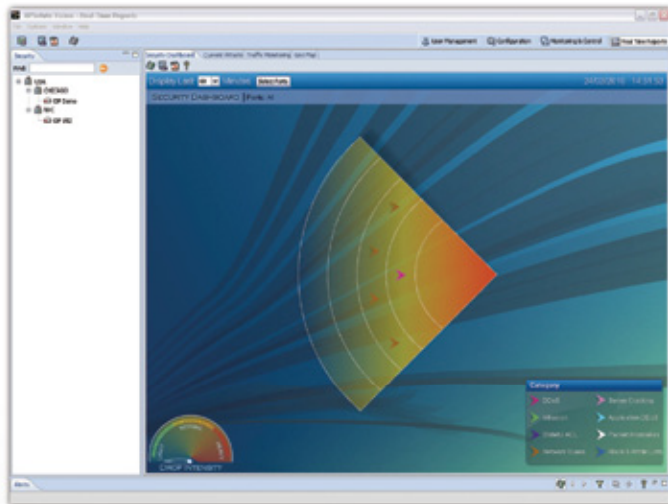
Unified Application Delivery and Security Management

APSSolute Vision is a specifically tailored unified management and monitoring application for application delivery and network security devices. It supports all aspects of management: initial device setup, ongoing maintenance, SSL certificate management, reporting, forensics, and more. It also provides central storage of vital device information, allowing IT managers to easily find hardware platform details, software versions, serial numbers, etc. This eliminates manual tracking of critical device information, and reduces errors.

Best-of-breed Reporting and Forensics Engine

APSSolute Vision provides an enterprise-wide view of security and attack statuses from a single console. Data from multiple devices can be collected and evaluated in a consolidated view of dashboards and reports. These reports—viewable from a secure portal or exported in HTML, PDF, etc.—provide extensive yet simple capabilities that allow users to easily drill down information in order to expedite incident identification and provide root cause analysis.

This improves collaboration between NOC and SOC teams, and accelerates the resolution of security incidents.

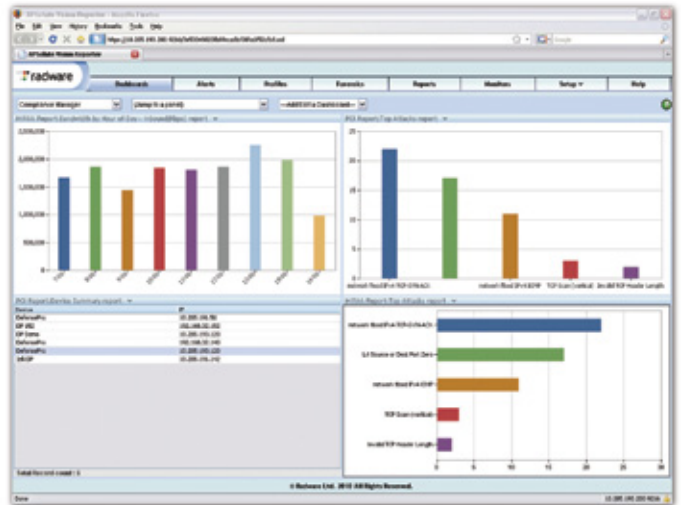


Complete Alignment with Enterprise Compliance Requirements and Regulations

APSSolute Vision provides complete alignment with the enterprise's compliance, regulations and business processes, providing compliance and audit professionals with a comprehensive status report across the enterprise. It ensures the appropriate separation of duties, collection of information, and operation auditing mandated by many regulations and information security standards (PCI-DSS, SOX, HIPAA, etc).

Through enhanced role-based access and logging capabilities, APSSolute Vision ensures all actions across the application delivery and security infrastructure, are logged and performed only by authorized personnel.

In addition, APSSolute Vision segregates statistical and performance data to support job-specific views, dashboards, analysis, and reporting. While executives may desire to view high-level summary reports, IT professionals can easily drill into more complex monitoring, reporting and forensics data.



Tight Integration with Enterprise Data Center NMS

APSSolute Vision is designed to integrate tightly with the enterprise data center's network operation centers (NOC) and the network management systems (NMS) used by the NOC operators. This provides NOC operators with a single site-wide monitoring and alerting view of all managed devices and applications. As soon as any network or service issue surfaces, alerts are automatically displayed in a dedicated alert browser, and a notification is sent (syslog, email, etc) to the NOC's NMS application. This ensures network operators are immediately aware of any problems, and reduces the time to resolution.

Full Alert Lifecycle Management

APSSolute Vision provides IT managers with a rich set of tools to manage all alerts (availability, performance, security, and more) within the existing infrastructure. Alerts are managed from the moment they occur (identification stage), through ticket opening, analysis, resolution, and verification stages until the problem is resolved and summarized. This ensures complete alignment with the business processes of both the enterprise and NOC/SOC teams.

APbsolute Vision Hardware Specifications	
Processor	Q9400 Intel Quad 2.6Ghz
Memory	8GB
Copper Gigabit Ethernet Ports	2
RS-232C Console	RJ-45 serial connection
Hard Drive	500GB
Dimensions	<ul style="list-style-type: none"> • Width: 424 mm (17 in.) • Depth: 457 mm (18 in.) • Height: 44 mm (1.7 in.) • EIA Rack or Standalone: 482 mm (19 in.)
Weight	7.6 kg (16.8 lbs)
Operating Temperature	0°C to 40°C (32°F to 104°F)
Relative Humidity	5% to 95% non-condensing
Maximum Power Consumption	168W
Maximum Heat Output	573 BTU
Input Voltage	AC: 100-240V 47-63Hz
Certifications	<ul style="list-style-type: none"> • Safety: EN 60950-1:2006, CB - IEC 60950-1, CCC, cTUVus/cULus • EMC: CE - EN 55022, EN 55024, EN 61000-3-2, EN 61000-3-3, IEC 61000 4-2 to 4-6, IEC 61000 4-8 & IEC 61000-4-11, FCC Part 15B Class A, ICES-003, VCCI, C-Tick • RoHS 6

APbsolute Vision Client OS Requirements and Specifications	
Supported OS	<ul style="list-style-type: none"> • Microsoft Windows XP • Microsoft Windows Vista • Microsoft Windows 7
Minimum Client Hardware Specifications	<ul style="list-style-type: none"> • 2GB of RAM • 2.66Ghz CPU

Radware APbsolute® Product Suite

Radware, the global leader in integrated application delivery solutions, assures the complete availability, performance and security of business-critical applications for nearly 10,000 enterprises and carriers worldwide. With Radware's comprehensive APbsolute suite of application delivery and network security products, companies can drive business productivity, improve profitability, and reduce IT operating and infrastructure costs by making their networks "business-smart."

Certainty Support

Radware offers technical support for all of its products through the Certainty Support Program. Each level of the Certainty Support Program consists of four elements – phone support, software updates, hardware maintenance, and on-site support. Radware also has dedicated engineering staff that can assist customers on a professional services basis for advanced project deployments.

Learn More

To learn more about how Radware's integrated application delivery solutions can enable you to get the most of your business and IT investments, email us at info@radware.com or go to www.radware.com.